

The key principle of an effective EAL service should be that it operates in the best interests of children and young people.

It will be a service which is flexible and responsive to needs

1. Is able to identify and meet individual need.
2. Is available to all those who need it.
3. Is focused on supporting inclusion.
4. Encourages participation and engagement with children and young people, families and the wider community.
5. Works in partnership with other services and agencies in local communities.
6. Adopts a holistic approach to meeting needs.



'Approximately 13 240 children and young people with EAL in Glasgow - almost 20% of total citywide school roll'

EAL Service 2013-14

English as an Additional Language Service

31 Moss-side Road
Glasgow
G41 3TR

Head of Service: Maria Walker

Phone: 0141 582 0217
Fax: 0141 582 0583

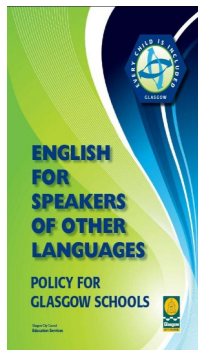
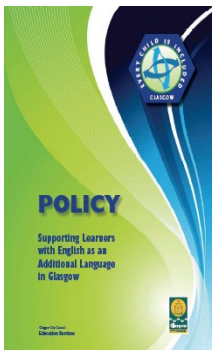
Email: unithead@eal.ea.glasgow.sch.uk

EAL Service WIKI
<http://eal.glasgowschools.wikispaces.net/>

Follow us on Twitter @EALGlasgow

EAL Service

Supporting Children and Young People with English as an Additional Language in Glasgow



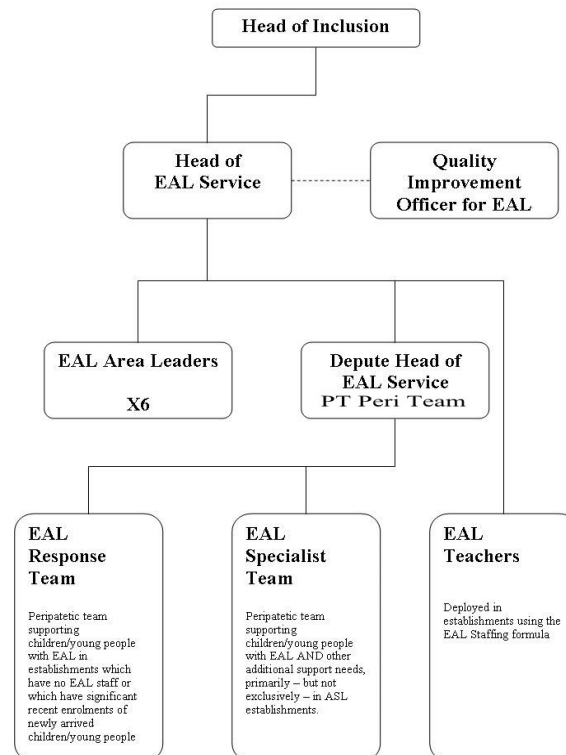
The EAL Service's Vision is to:

1. Improve attainment and achievement for children and young people with English as an additional language.
2. Promote and support inclusion of children and young people with English as an additional language.
3. Ensure that children and young people with English as an additional language become successful learners, confident individuals, responsible citizens and effective contributors.
4. Respect, promote and support the development of children and young people's bilingual skills.

The EAL Service's Values are to:

1. Put children and young people first and promote rights and responsibilities.
2. Embed trust, respect, wisdom, justice, integrity and equality in all that we do.
3. Actively work in collaboration and cooperation with all partners.
4. Celebrate and value diversity.

EAL Structure



The EAL Service aims to:

1. Support children and young people with English as an additional language to develop English language for life, learning and work.
2. Provide learning experiences which enable children and young people with English as an additional language to fully access the curriculum.
3. Develop children and young people's pride and confidence in all the language skills they possess.
4. Encourage partnership working with schools, parents and other professionals in the support of children and young people with EAL.
5. Help build the capacity of schools to meet the needs of children and young people with EAL.
6. Provide staff development opportunities for EAL Service teachers which will encourage professional and personal development, ensure that they feel valued in their roles and lead to improvements in learners' experiences.