

# **Colour Theory**

## **Samuel Peploe**





## **There are 7 visual elements of art & design.**

Which one can be described as warm, cool, bright, etc.?

- A Tone
- B Pattern
- C Colour
- D Line



**A secondary colour is made by mixing two primary colours.**

What are the secondary colours?

- A Green, purple and orange
- B Red, blue and orange
- C Green, purple and yellow
- D Red, blue and yellow



# Colours can harmonise or contrast when placed next to each other.

Which of the following is a  
set of contrasting colours?

- A Blue and purple
- B Red and orange
- C Green and yellow
- D Purple and yellow



## Colours can be cool or warm?

Which set of colours are all warm?

- A Red, blue and yellow
- B Green, purple and red
- C Red, yellow and blue
- D Red, yellow and orange



# **Tone is one of the visual elements.**

Which is the correct description of tone?

- A Containing or using only one colour
- B When colours are combined to make black
- C Combining primary and secondary colours
- D A range of lightness to darkness



## **Sometimes artists work in monochrome.**

Which is the correct  
description of  
monochromatic?

- A Containing or using only one colour
- B When colours are combined to make black
- C Combining primary and secondary colours
- D A range of lightness to darkness



# Artists create shades when painting.

Which is the correct  
description of a shade?

- A A mixture of colour with black, which reduces lightness.
- B The mixture of colour with white, which increases lightness.





## Artists create tints when painting.

Which is the correct description of a tint?

- A A mixture of colour with black, which reduces lightness.
- B The mixture of colour with white, which increases lightness.



# Artists create hues when painting.

What is the more commonly used word for a hue?

- A Pattern
- B Colour
- C Shape
- D Texture



## Samuel Peploe is a very famous Scottish artist.

Which of the following statements about Samuel Peploe is **false**?

- A He was a Post-Impressionist painter.
- B He was one of the four Scottish Colourists.
- C He was born in 1880 and died in 1936.
- D He was influenced by French painting.



## Samuel Peploe's style contained new painting techniques.

Which of the following statements would **not** describe his style?

- A Brushstrokes are bold and vigorous
- B Strong use of angular lines
- C Delicate lines and limited colour
- D Dry-brush technique



**A still life is a work of art depicting mostly inanimate subject matter.**

Which of the following items would you **not** typically find in a still painting by Samuel Peploe?

- A Flowers
- B Jewellery
- C Vases
- D Fruit



**Samuel Peploe had many social, cultural and other influences which developed the way he worked.**

Which of the following statements is **false**?

- A Living in France changed his use of colour.
- B He was the youngest of the Scottish Colourists.
- C His art was defined as 'Franco-Scottish'.
- D His works show the influence of Manet.



***Samuel Peploe 'Still Life'  
(1913) Oil on Canvas.***

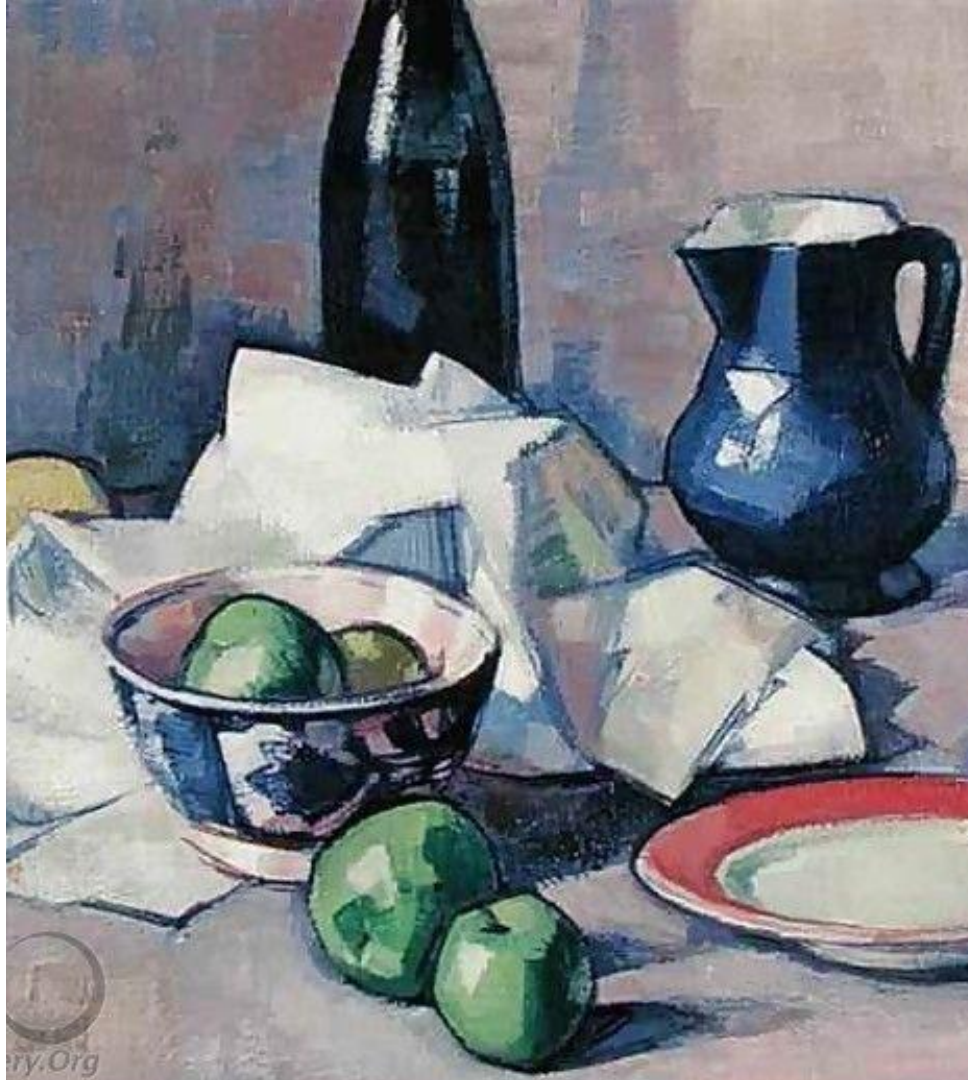
Where in this painting are  
the warm colours?





***Samuel Peploe 'Still Life,  
Black Bottle' (1916) Oil on  
Canvas.***

Does this painting contain  
mostly cool or warm  
colours?







***Samuel Peploe 'Still Life with Bottle' (1912) Oil on Canvas.***

How does the red in this painting draw the viewer in?





***Samuel Peploe 'Tulips and Fruit' (1919) Oil on Canvas.***

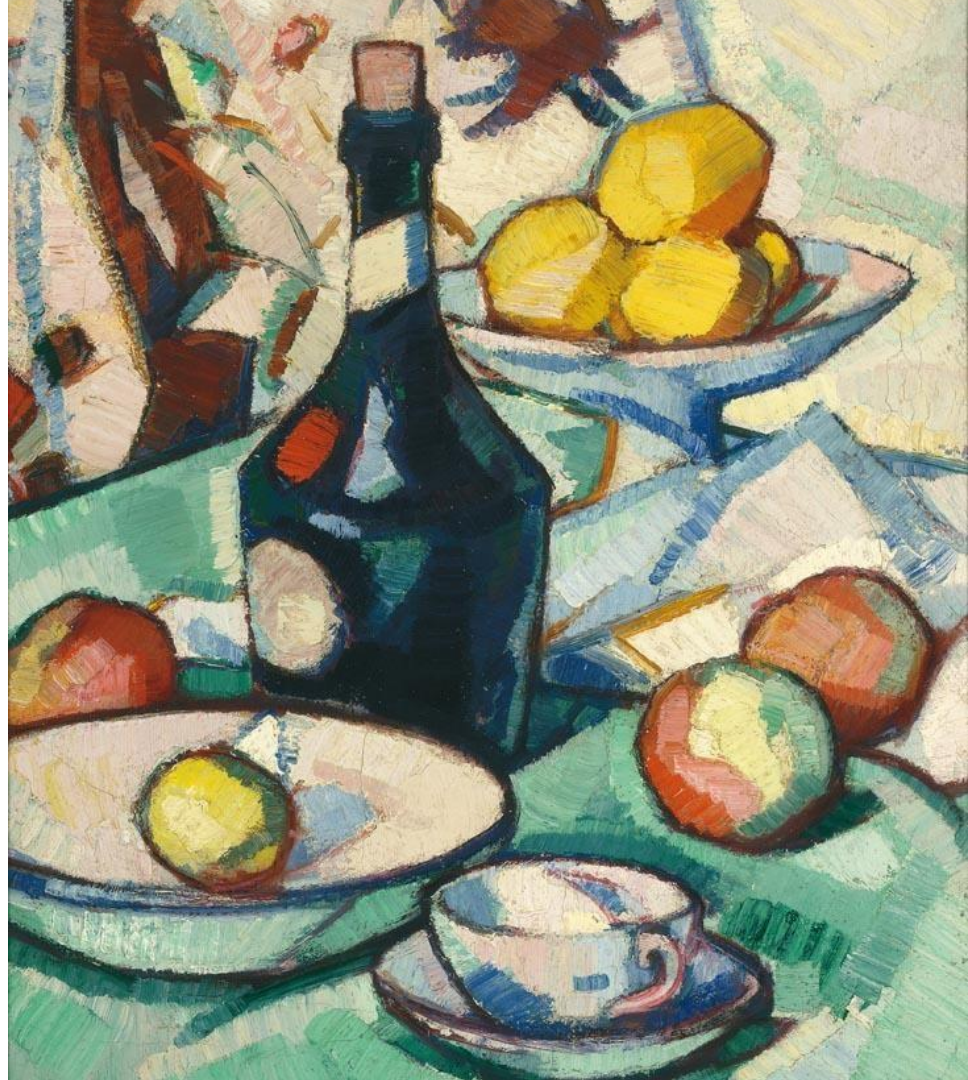
What word might you use to describe the colour in this painting?





***Samuel Peploe 'Still Life with Benedictine Bottle and Fruit' (1913-17) Oil on Canvas.***

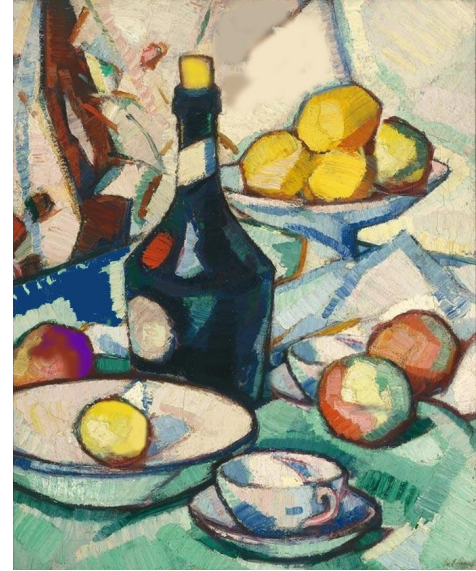
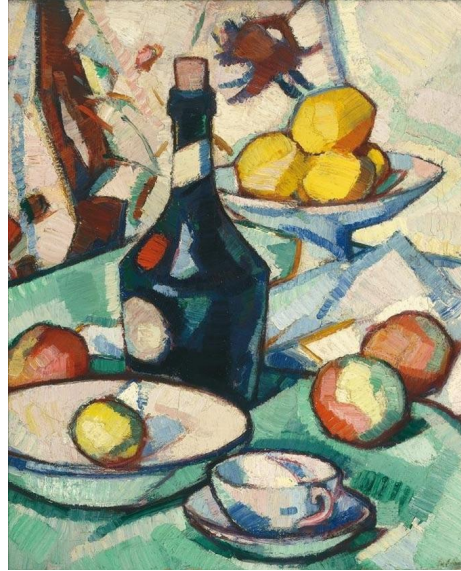
In this painting how does the background colours compare to the colours of the fruit?





***Samuel Peploe 'Still Life with Benedictine Bottle and Fruit' (1913-17) Oil on Canvas.***

The painting on the left is the original. How many changes can you see have been made to the one on the right?





**This word search  
contains lots of art  
terminology.**

How many words can you  
find in the word search?

|   |   |   |   |   |   |   |   |   |   |   |   |   |
|---|---|---|---|---|---|---|---|---|---|---|---|---|
| P | X | C | O | L | D | D | T | I | N | T | Y | H |
| R | E | O | F | S | R | F | S | X | P | I | A | N |
| I | Y | N | U | E | E | I | E | O | G | R | I | T |
| M | R | T | Q | N | D | C | C | E | M | E | H | O |
| A | Z | R | J | O | S | D | O | O | U | F | S | W |
| R | T | A | W | T | H | Z | N | L | M | H | E | W |
| Y | Q | S | P | C | V | I | D | E | G | A | K | A |
| U | B | T | I | W | S | G | A | L | D | N | O | R |
| A | K | I | B | I | T | V | R | Y | M | A | U | M |
| R | J | N | N | B | X | K | Y | M | J | Z | H | A |
| L | A | G | Q | C | V | H | U | E | N | O | P | S |
| M | O | N | O | C | H | R | O | M | A | T | I | C |
| C | O | M | P | L | E | M | E | N | T | A | R | Y |